

Product Range 2007


iFIT
simply faster to install



+GF+

GEORG FISCHER
PIPING SYSTEMS

iFIT

		Page
	Pipes for sanitary and heating	5
	Adaptor	8
	Outlet joints with box	9
	iFIT-INSTAFLEX Module	10
		
	iFIT-Press Module	11
		
	Outlet joints without box	12
	Accessories for pipe outlets	15
		
	Manifold	18
	Accessories from the INSTAFLEX range	19
		
	Fittings	21
		
	Adaptor on thread	23
	Pipe Supports and Brackets	25
		
	Connecting elbow	28
		
	Accessories for radiator connecting system	30
		



Tools 31

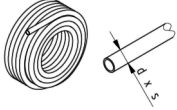
Technical Data 35

Numerical Product Range - Code number 55

Numerical Product Range - Catalog number 59

Pipes for sanitary and heating

4500



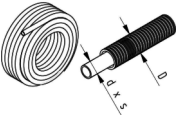
Pipe multilayer without protective pipe

- Packed in cardboard boxes
- Pipe multilayer in coils without protective pipe

For sanitary and heating.

d [mm]	s [mm]	Code	SP	kg/m
16	2.0	762 101 000	100	0.118
20	2.0	762 101 001	50	0.154
25	2.5	762 101 130	50	0.289
32	3.0	762 101 131	50	0.354

4505



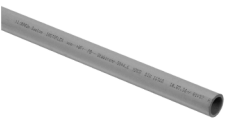
Pipe multilayer with protective pipe

- Packed in cardboard boxes
- Pipe multilayer in coils with protective pipe

For sanitary and heating.

d [mm]	s [mm]	Code	SP	kg/m	D [mm]
16	2.0	762 101 003	75	0.194	25
20	2.0	762 101 004	50	0.246	30

4510



Pipe multilayer in bars of 5,0 m

- Packed in cardboard boxes

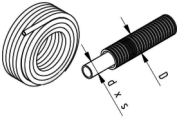
For sanitary and heating.

d [mm]	s [mm]	Code	SP	kg/m
16	2.0	762 101 005	45	0.118
20	2.0	762 101 006	45	0.154
25	2.5	762 101 007	50	0.284
32	3.0	762 101 008	20	0.354

4515

Pipe PB in protective pipe

- Packed in cardboard boxes
- Pipe PB in coil with protective pipe



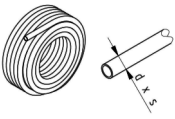
for sanitary

d [mm]	s [mm]	Code	SP	kg/m	D [mm]
16	2.0	762 101 012	60	0.164	25
20	2.0	762 101 013	60	0.207	30
25	2.5	762 101 011	30	0.286	34

4516

Pipe PB without protective pipe

- Packed in cardboard boxes
- Pipe PB in coils without protective pipe



for sanitary

d [mm]	s [mm]	Code	SP	kg/m
16	2.0	762 101 126	60	0.088
20	2.0	762 101 127	60	0.115
25	2.5	762 101 128	30	0.178

4502

Pipe multilayer insulated 6 mm



- Packed in cardboard boxes
- Pipe multilayer in coils without protective pipe



For sanitary and heating.
* on request

d [mm]	s [mm]	Code	SP	kg/m	d1 [mm]
16	6.0	762 101 024	50	0.150	28
20	6.0	762 101 032	50	0.200	32
25	6.0	762 101 043	25	0.400	37
*32	6.0	762 101 074	25	0.500	44

4502

Pipe multilayer insulated 9 mm



- Packed in cardboard boxes
- Pipe multilayer in coils without protective pipe



For sanitary and heating.
* on request

d [mm]	s [mm]	Code	SP	kg/m	d1 [mm]
16	9.0	762 101 076	50	0.230	34
20	9.0	762 101 078	50	0.280	38
25	9.0	762 101 082	25	0.450	43
*32	9.0	762 101 084	25	0.600	50

4502

Pipe multilayer insulated 13 mm



- Packed in film web

For sanitary and heating.

* on request

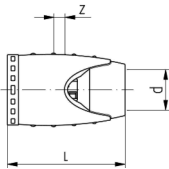


d [mm]	s [mm]	Code	SP	kg/m	d1 [mm]
*16	13.0	762 101 086	50	0.300	42
*20	13.0	762 101 090	25	0.400	46
*25	13.0	762 101 104	25	0.500	51
*32	13.0	762 101 124	25	0.650	58

Adaptor

4520

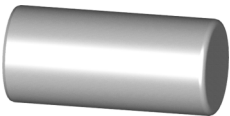
Adaptor



d [mm]	Code	SP	kg	z [mm]	L [mm]
16	762 101 030	10	0.023	5	48
20	762 101 031	10	0.030	5	49
25	762 101 034	5	0.067	8	62
32	762 101 035	5	0.088	8	63

4525

Cap for adaptor



d [mm]	s [mm]	Code	SP	kg
16	2.0	762 101 017	5	0.006
25	2.5	762 101 027	5	0.013

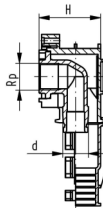
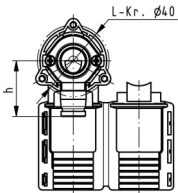
Outlet joints with box

4531

Single pipe outlet with box

Model:

- not for light and wood construction
- With fixing screws.



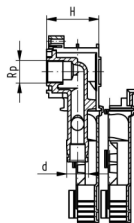
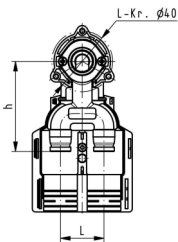
d [mm]	Rp [inch]	Code	SP	kg	H [mm]	h [mm]
16 / 20	½	762 101 028	10	0.195	50	43

4536

Dual pipe outlet with box

Model:

- not for light and wood construction
- With fixing screws.

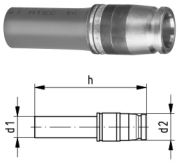


d [mm]	Rp [inch]	Code	SP	kg	H [mm]	h [mm]
16 / 20	½	762 101 029	10	0.350	50	83

iFIT-INSTAFLEX Module

4606

iFIT-INSTAFLEX Adaptor

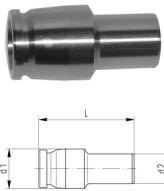


d2 [mm]	d1 [mm]	Code	SP	kg	h [mm]
16 / 20	16	762 101 057	1	0.059	84
16 / 20	20	762 101 058	1	0.071	86
25 / 32	25	762 101 059	1	0.145	101
25 / 32	32	762 101 060	1	0.177	101

iFIT-Press Module

4680

iFIT-Press Module



- according to DIN 10312

d1 [mm]	d2 [mm]	Code	SP	kg	L [mm]
16 / 20	15	762 101 190	2	0.042	54
16 / 20	18	762 101 191	2	0.047	56
25 / 32	22	762 101 192	2	0.114	70
25 / 32	28	762 101 193	2	0.114	70

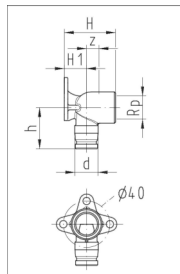
Outlet joints without box

4530

Single pipe outlet

Model:

- applicable for liht and wood construction



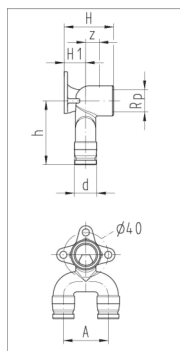
d [mm]	Rp [inch]	Code	SP	kg	H [mm]	H1 [mm]	h [mm]	z [mm]	
16 / 20	1/2	762 101 018	10	0.141	44	19	36	12	
16 / 20	1/2	762 101 070	5	0.201	64	19	36	32	
16 / 20	3/4	762 101 019	2	0.168	44	19	39	11	

4535

Dual pipe outlet

Model:

- applicable for liht and wood construction



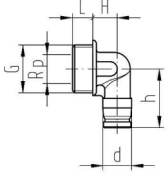
d [mm]	Rp [inch]	Code	SP	kg	H [mm]	H1 [mm]	h [mm]	z [mm]	A [mm]	
16 / 20	1/2	762 101 022	2	0.238	44	19	57	12	40	
16 / 20	1/2	762 101 071	2	0.298	64	19	57	32	40	

4545

WC single connection module concealed

Model:

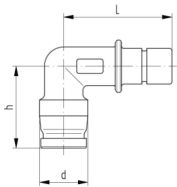
- -inclusive plastic union nut



d [mm]	Rp [inch]	Code	SP	kg	G [inch]	L [mm]	H [mm]	h [mm]
16 / 20	½	762 101 023	5	0.157	1	14	17	41

4546

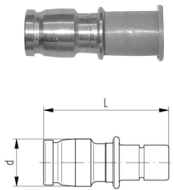
Pipe outlet for flushing cistern Meplafix



d [mm]	Code	SP	kg	L [mm]	h [mm]
16 / 20	762 101 025	5	0.085	45	34

4548

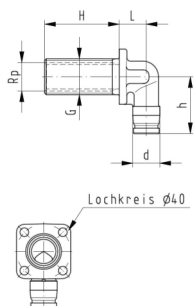
Pipe outlet for flushing cistern Meplafix



d [mm]	Code	SP	kg	L [mm]
16 / 20	762 101 026	5	0.060	53

4547

Single pipe outlet L55 1/2" - 3/4"



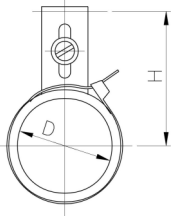
d [mm]	Rp [inch]	Code	SP	kg	L [mm]	H [mm]	h [mm]	G [inch]
16 / 20	½	762 101 047	1	0.250	20	55	42	3/4

Accessories for pipe outlets

3152

Bracket for waste pipe

- From the INSTAFLEX range

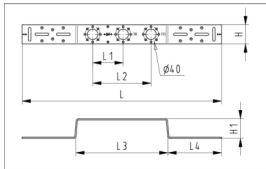


Code	SP	kg	D [mm]	H [mm]
760 854 677	1	0.080	56	65 - 80

3100

Angular plate

- With LK 40 and thread M 6
- From the INSTAFLEX range



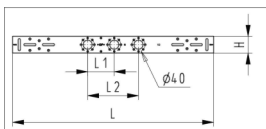
*suitable also for GIS

	Code	SP	kg	H [mm]	H1 [mm]	L [mm]	L1 [mm]	L2 [mm]	L3 [mm]	L4 [mm]
single	760 869 917	5	0.310	50	51	370			80	145
double	760 869 916	5	0.560	50	51	470	100		180	145
*double	760 856 042	5	0.600	50	51	523		153	233	145
*triple	760 869 915	5	0.600	50	51	523	80	153	233	145

3101

Distance plate flat

- With LK 40 and thread M 6
- From the INSTAFLEX range

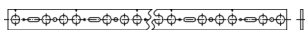


	Code	SP	kg	H [mm]	L [mm]	L1 [mm]	L2 [mm]
single	760 869 920	5	0.460	50	452		
double	760 869 919	5	0.560	50	552	100	
triple	760 869 918	5	0.600	50	605	80	153

3935

Installation bar, length 2 m

- From the INSTAFLEX range

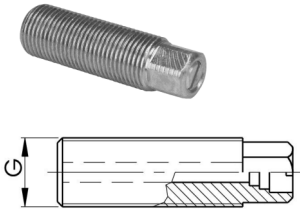


Code	SP	kg
760 853 683	5	2.840

3936

Mounting bolt

- From the INSTAFLEX range

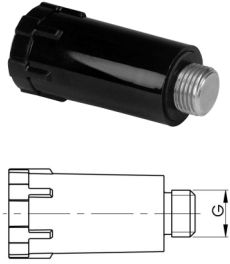


G [inch]	Code	SP	kg
1/2	760 853 291	5	0.141

3937

Wall inlet plug

- From the INSTAFLEX range

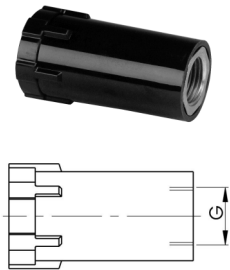


G [inch]	Code	SP	kg
1/2	760 853 297	10	0.088

3938

Fastening sleeve

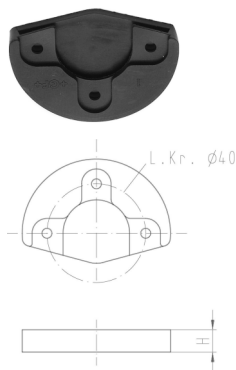
- From the INSTAFLEX range



G [inch]	Code	SP	kg
1/2	760 853 298	10	0.051

4540

Sound proofing for pipe outlet



	Code	SP	kg
Rubber isolator	762 101 033	10	0.010

4541

Sound proofing for pipe outlet

- single or double



	Code	SP	kg
Set single	762 101 036	5	0.073
Set double	762 101 037	2	0.115

2965

Injection moulding collar

- From product range **PROFIFLEX**

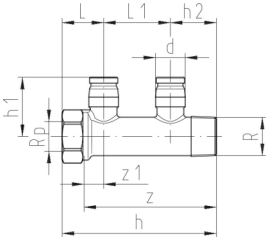


d [mm]	Code	SP	kg
1 / 2	760 859 806	10	0.004

Manifold

4550

Manifold module



d [mm]	Rp [inch]	R [inch]	outlet	Code	SP	kg
16 / 20	3/4	3/4	double	762 101 048	2	0.280
16 / 20	3/4	3/4	triple	762 101 049	2	0.389
16 / 20	3/4	3/4	4-fold	762 101 053	2	0.527

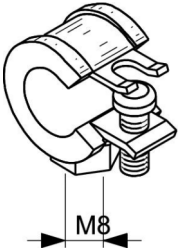
d [mm]	h [mm]	h1 [mm]	h2 [mm]	L [mm]	L1 [mm]	z [mm]	z1 [mm]
16 / 20	104	40	31	28	45	90	14
16 / 20	149	40	31	28	45	135	14
16 / 20	194	40	31	28	45	180	14

Accessories from the INSTAFLEX range

3286

Mounting bracket M8

- From the INSTAFLEX range

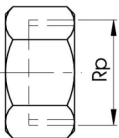


Code	SP	kg	
760 856 212	10	0.029	

3266

Cap

- From the INSTAFLEX range

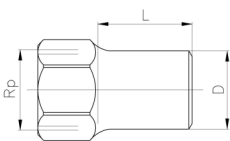
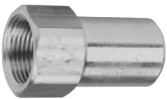


Rp [inch]	Code	SP	kg	
3/4	760 853 794	5	0.084	
1	760 853 706	5	0.134	

3268

Cap long

- From the INSTAFLEX range

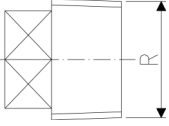


Rp [inch]	Code	SP	kg	D [mm]	L [mm]	
3/4	760 853 596	5	0.162	27	34	

3267

Plug

- From the INSTAFLEX range

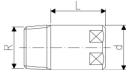
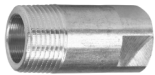


R [inch]	Code	SP	kg	
3/4 1	760 853 792	5	0.050	
	760 853 793	5	0.084	

3264

Plug long

- From the INSTAFLEX range

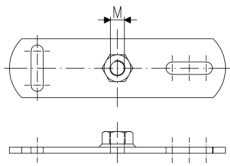


R [inch]	Code	SP	kg	D [mm]	L [mm]	
3/4	760 869 989	5	0.150	27	52	

5093

Base plate

- From the INSTAFLEX range

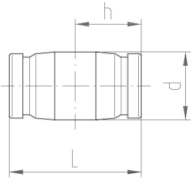


Code	SP	kg	M	
761 066 741	50	0.159	M8	

Fittings

4585

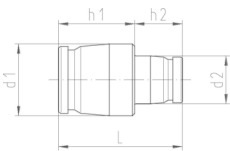
Socket/Reducing bush module



d [mm]	Code	SP	kg	L [mm]	h [mm]
16 / 20	762 101 044	10	0.007	39	20
25 / 32	762 101 175	5	0.023	56	28

4586

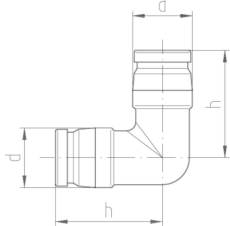
Reducing bush module



d1 [mm]	d2 [mm]	Code	SP	kg	L [mm]	h1 [mm]	h2 [mm]
32 / 25	20 / 16	762 101 177	2	0.018	52	32	20

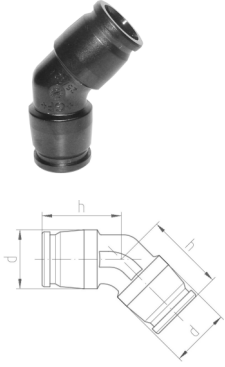
4590

Elbow 90° module



d [mm]	Code	SP	kg	h [mm]
16 / 20	762 101 046	10	0.012	36
25 / 32	762 101 179	5	0.042	54

4591

Elbow 45° module

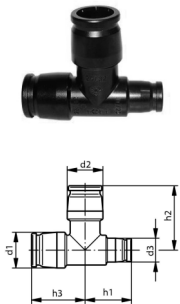
d [mm]	Code	SP	kg	h [mm]
25 / 32	762 101 180	5	0.033	40

4595

Tee equal module

d [mm]	Code	SP	kg	h [mm]	h1 [mm]
16 / 20	762 101 042	10	0.015	31	37
25 / 32	762 101 181	5	0.053	45	54

4600

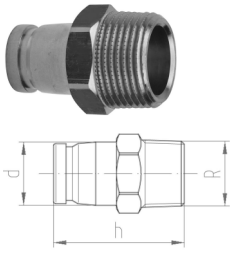
Tee reduced module

d1 [mm]	d2 [mm]	d3 [mm]	Code	SP	kg	H1 [mm]	H2 [mm]	H3 [mm]
25 / 32	25 / 32	16 / 20	762 101 183	2	0.043	45	54	39
25 / 32	16 / 20	25 / 32	762 101 185	2	0.043	45	48	45
25 / 32	16 / 20	16 / 20	762 101 187	2	0.033	45	48	39

Adaptor on thread

4605

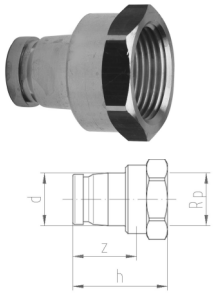
Adaptor male module



d [mm]	R [inch]	Code	SP	kg	h [mm]
16 / 20	1/2	762 101 038	10	0.061	42
16 / 20	3/4	762 101 039	10	0.078	43
25 / 32	3/4	762 101 091	2	0.144	51
25 / 32	1	762 101 092	2	0.189	55

4610

Adaptor female module



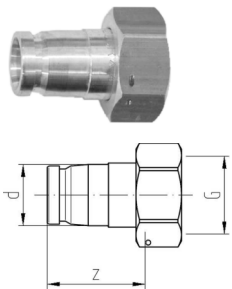
d [mm]	Rp [inch]	Code	SP	kg	h [mm]	z [mm]
16 / 20	1/2	762 101 040	10	0.067	36	23
16 / 20	3/4	762 101 041	10	0.087	39	24
25 / 32	3/4	762 101 093	2	0.131	45	31
25 / 32	1	762 101 094	2	0.163	49	32

4615

Union flat seal module

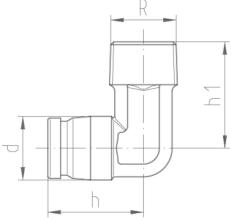
Model:

- supplied with sealing



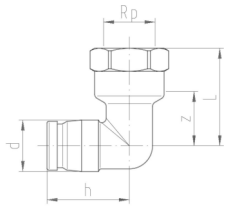
d [mm]	G [inch]	Code	SP	kg	z [mm]
16 / 20	3/4	762 101 056	2	0.090	35
25 / 32	3/4	762 101 095	2	0.170	48
25 / 32	1	762 101 096	2	0.210	55
25 / 32	1 1/4	762 101 097	2	0.250	48
25 / 32	1 1/2	762 101 098	2	0.307	50

4620

Adaptor elbow male thread-module

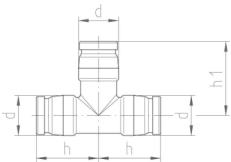
d [mm]	R [inch]	Code	SP	kg	h [mm]	h1 [mm]	
16 / 20	½	762 101 051	10	0.077	30	34	
16 / 20	¾	762 101 052	10	0.092	30	35	
25 / 32	¾	762 101 099	2	0.204	45	43	
25 / 32	1	762 101 100	2	0.213	45	45	

4630

Adaptor elbow female thread-module

d [mm]	Rp [inch]	Code	SP	kg	h [mm]	L [mm]	z [mm]	
16 / 20	½	762 101 101	10	0.103	32	38	25	
16 / 20	¾	762 101 105	10	0.129	36	40	22	

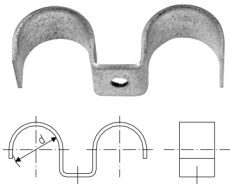
4625

Adaptor Tee female thread-module

d [mm]	Rp [inch]	Code	SP	kg	h [mm]	h1 [mm]	z [mm]	
16 / 20	½	762 101 055	5	0.131	32	38	25	
25 / 32	¾	762 101 103	2	0.213	43	50	36	

Pipe Supports and Brackets

3915

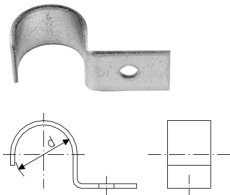


Pipe clip, metal

- From the INSTAFLEX range

d [mm]	Code	SP	kg
16	760 853 628	50	0.040

3920

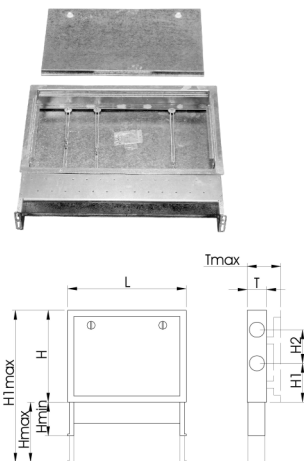


Pipe clip, metal

- From the INSTAFLEX range

d [mm]	Code	SP	kg
16	760 853 254	50	0.027
20	760 853 567	50	0.031
25	760 854 951	50	0.042

3240

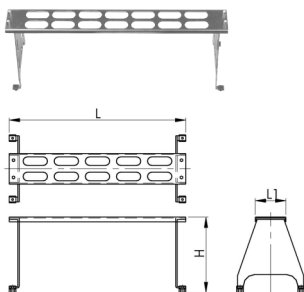


Service cabinet

- From the INSTAFLEX range

L [mm]	H [mm]	T [mm]	Code	SP	kg	H max. [mm]	H min. [mm]	T max. [mm]	T min. [mm]	H1 [mm]	H2 [mm]
600	500	100	760 856 201	-	13.000	350	200	175	100	200	175
750	500	100	760 856 202	-	15.000	350	200	175	100	200	175

3248



Support with pipe guidance

Model:

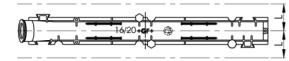
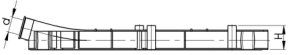
- can also be used as fit up aid
- From the INSTAFLEX range

to service cabinet	Code	SP	kg	L [mm]	L1 [mm]	H [mm]
600	760 856 207	1	2.500	600	100	270
750	760 856 208	1	2.800	750	100	270

3890

Pipe transfer piece d 16 / d 20

- From the INSTAFLEX range

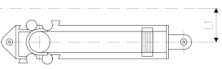
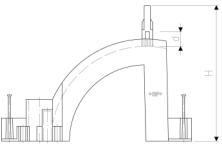


d [mm]	Code	SP	kg	L [mm]	H [mm]
16 / 20	760 853 299	30	0.118	400	45

3891

Pipe transfer bend d 16 / d 20

- From the INSTAFLEX range

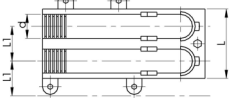
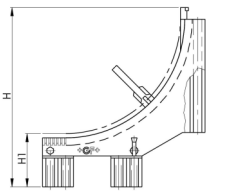


d [mm]	Code	SP	kg	H [mm]	L1 [mm]
16 / 20	760 853 300	18	0.106	180	45

3892

Insta Pipe support d 16 / d 20

- From the INSTAFLEX range

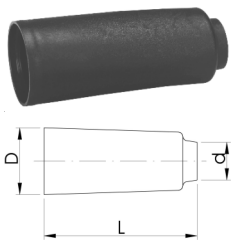


d [mm]	Code	SP	kg	L [mm]	L1 [mm]	H [mm]	H1 [mm]
16 / 20	760 853 399	12	0.228	210	45	235	150

3921

Cap for protective pipe

- From the INSTAFLEX range

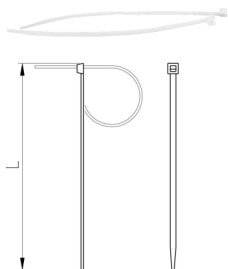


d [mm]	Colors	Code	SP	kg	D [mm]	L [mm]
16	red	760 854 986	10	0.005	25	70
16	green	760 854 987	10	0.005	25	70
20	red	760 854 988	10	0.007	30	70
20	green	760 854 989	10	0.007	30	70

3930

Pipe binder

- From the INSTAFLEX range



d-d [mm]	Code	SP	kg	L [mm]
16 - 40	760 853 283	100	0.001	200
50 - 75	760 853 284	100	0.003	300
90 - 110	760 854 984	100	0.001	430

Connecting elbow

4555

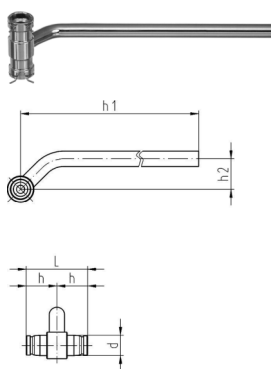
Single



d [mm]	Code	SP	kg	h [mm]	h1 [mm]
16 / 20	762 101 064	5	0.170	330	84

4560

Double



d1 [mm]	d2 [mm]	Code	SP	kg	h [mm]	h1 [mm]	h2 [mm]	L [mm]
16 / 20	16 / 20	762 101 065	5	0.195	30	330	30	60

4565

Sound proofing element

- single or double

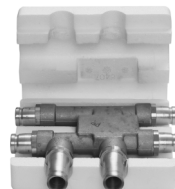


Code	SP	kg
762 101 066	5	0.100

4570

Cross-Tee module

-with isolation case



d [mm]	Code	SP	kg	L [mm]	L1 [mm]	H [mm]	H1 [mm]	H2 [mm]
16 / 20	762 101 068	1	0.723	50	50	63	66	46

4580

Euro cone union module

only for multilayer pipe

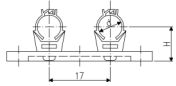


d [mm]	Rp [inch]	Code	SP	kg
16	3/4	762 101 072	10	0.027
20	3/4	762 101 073	10	0.037

Accessories for radiator connecting system

Single spacer

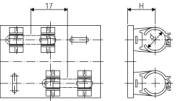
4054



d [mm]	Code	SP	kg	H [mm]
16	762 101 061	5	0.050	26

4054

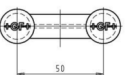
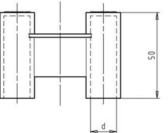
Double spacer



d [mm]	Code	SP	kg	H [mm]
16	762 101 062	5	0.156	38

4054

Spacer



d [mm]	Code	SP	kg
16	762 101 063	10	0.015

Tools

4635

Tool set for pipes ML- and PB



d [mm]	Code	SP	kg
16 / 20	762 101 122	1	1.170
25 / 32	762 101 133	1	1.466



Tool set ø 16/20/25/32



- It's equipped with: gauge-trimmer, 2 pipe cutter, bending pipe spring.

d	Code	SP	kg
16/20/25/32	762 101 166	1	3.700

4640

Chamfering tool for pipes ML- and PB



d [mm]	Code	SP	kg
16	762 101 116	1	0.191
20	762 101 120	1	0.210
25	762 101 125	1	0.238
32	762 101 132	1	0.315

4645

Pipe shears d16-20 for pipes ML- and PB



d	Code	SP	kg
16 / 20	762 101 108	1	0.321
Spare blades	762 101 109	1	0.019

5300

Pipe cutter d16-32 for pipes ML- and PB



d	Code	SP	kg
16 - 32	762 101 117	1	0.400
Spare blades	762 101 118	1	0.006

4650

Pipe bending tool for pipes ML



d [mm]	Code	SP	kg
16	762 101 112	-	0.440
20	762 101 113	-	0.643
25	762 101 114	-	0.657
32	762 101 115	-	0.700

4665

Pipe draw coupling

d [mm]	Code	SP	kg
16	762 101 154	1	0.044
20	762 101 155	1	0.090

4526

Wall inlet plug

d [mm]	Code	SP	kg
16	762 101 150	1	0.175
20	762 101 151	1	0.192
25	762 101 152	1	0.223
32	762 101 153	1	0.349

4651

Tool belt**Note:**

- Without tools



Code	SP	kg
762 101 119	1	0.540

Technical Data

Flow rate according	36
Physical properties	39
Fewer parts, more options	42
Flushing times	45
Pressure loss single tapping	46
Dimensioning	48
Bending radii for ML-Pipes	50
Expansion	51
Calculation example	52

iFIT



Easy and fast to install

iFIT is used for hot and cold water pipes in drinking water installations and for heating installations.

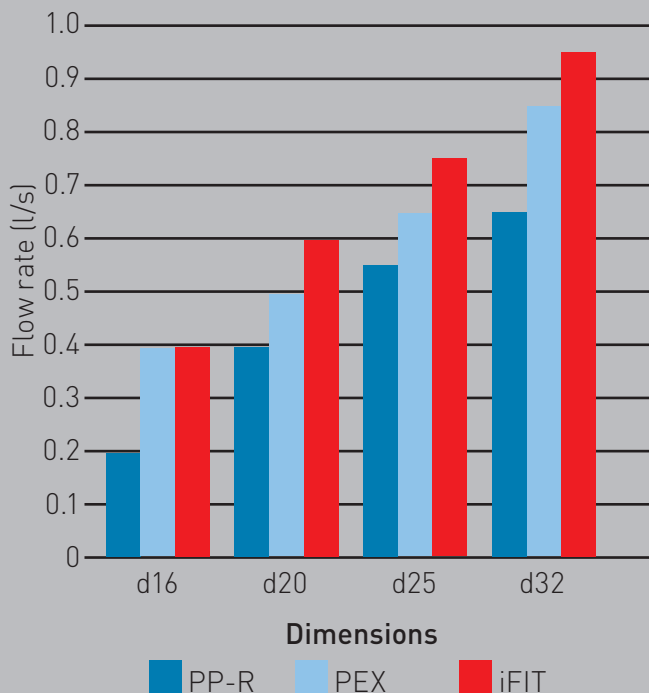
The rapid and easy jointing and dependable polybutene or multi-layer composite pipes render iFIT an extremely cost-effective choice.

Approved and tested.



iFIT

Flow rate according to W3 D (2000)



INSTAFLEX d16-d110

The universal complete system for the distribution of drinking water, including basement and riser pipes.

FIT d16-d32

The modular system for plumbing and heating. With 50% fewer components, more options compared to conventional installation systems.

Fewer parts, more options!



iFIT Right for the job

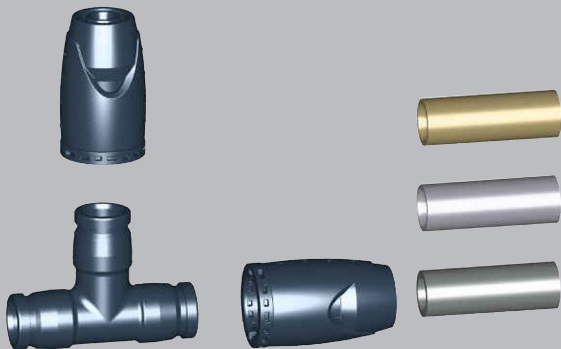
System concept



Set a new record

The modular iFIT system offers more options with 50% fewer components compared to conventional installation systems.

All you need on the job, safe and simply faster.



Technical Data

Pipe Material

- Non-permeable multi-layer composite pipes: aluminium core in between inner and outer plastic layers.
- Homogenous polybutene (PB) all-plastic pipes for plumbing installations.

Fittings material:

Fittings of state-of-the-art, high-performance PPSU plastic and dezincification-resistant brass.





Physical properties	Multi-layer composite	Polybutene
max. working temperature	95 °C/5 bar	95 °C/5 bar
max. continuous working pressure	10 bar/70 °C	10 bar/70 °C
Thermal conductivity (pipe)	0.43 W/mK	0.22 W/mK
Pipe surface roughness	0.007 mm	0.007 mm



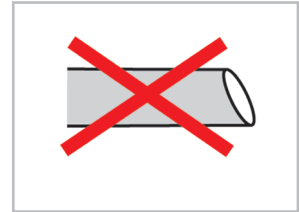
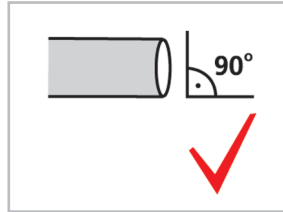
iFIT Assembly

Assembly instructions



1. Cut pipe square and to length with pipe shears or pipe cutter.

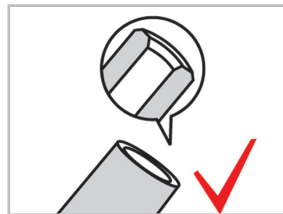
Important: iFIT tools must be used!



Important:
Cut pipe at 90° angle.



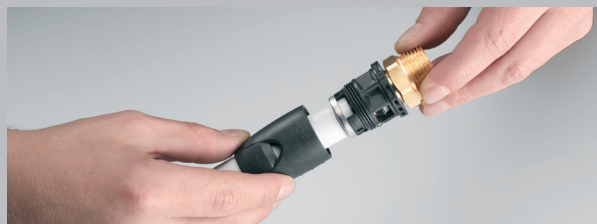
2. Calibrate and deburr pipe with hand tool. After 2-3 rotations, a circumferential bevel of at least 1 mm should be visible.



Important:
Following calibration, remove all shavings, inside and outside of the pipe.

Disassembly instructions

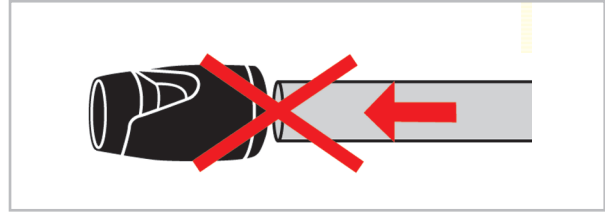
1. Open the body with two pliers (one plier on the collar, the other on the body) inner catch will snap off
2. Unscrew housing
3. Pull pipe out
4. Remove half-shells
5. Pull out nipple



Improper assembly or failing to follow the assembly instructions can result in leakage!



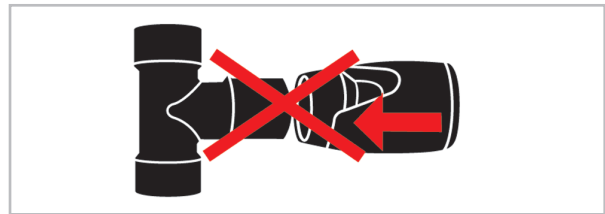
3. Push the adapter onto the pipe until the stop. The correct insertion depth is visible in the window.



Important:
The adapters are individually packaged for protection. Only remove packaging immediately prior to use.



4. Push the adapter onto the module until you hear it click into place.



Important:
The pipe is held in place with a dynamic mechanism that can cause it to move back a few mm during operation or the pressure test. In-wall adapters that are not insulated should be fit with insulation tape.

Disassembly tips:

- Every adapter may only be used once and must be destroyed after use!
- Caution: Risk of injury from sharp edges of retention ring!
- Correct installation always requires cutting the pipe to length!

Fastening technique

iFIT installations generally do not require any carriers or pipe supports.

Any commercially available fastening materials may be used for this purpose, taking into consideration the given spacing distances. For surface-mounted pipes, expansion must be absorbed either by changes in direction or expansion loops, according to the table on page 17

iFIT Fewer parts, more options!

Conventional system Tees 16/20/25/32

- Tee 16
- Tee 20
- Tee 20-16-20
- Tee 20-20-16
- Tee 20-16-16
- Tee 16-20-16
- Tee 25
- Tee 32
- Tee 32-25-32
- Tee 32-32-25
- Tee 32-25-25
- Tee 25-32-25



iFIT Tees 16/20/25/32

- T-module 16/20
- T-module 25/32
- Adapter 16
- Adapter 20
- Adapter 25
- Adapter 32

12 Tees

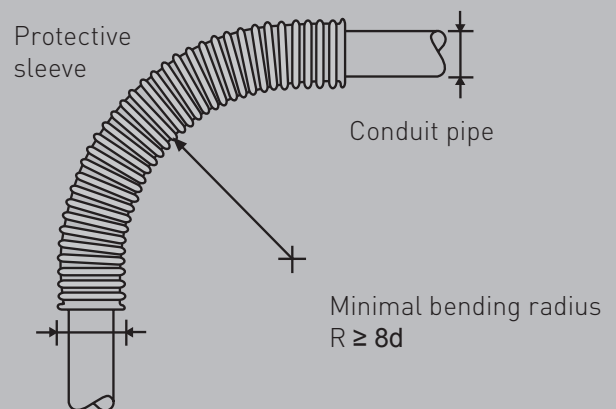
-50 % system!

6 components

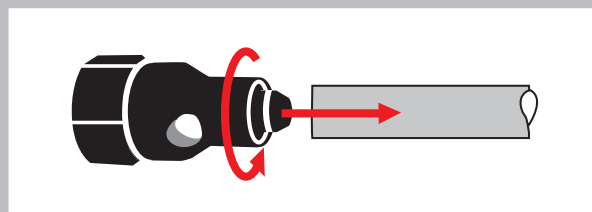
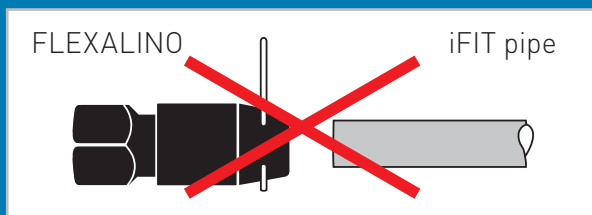
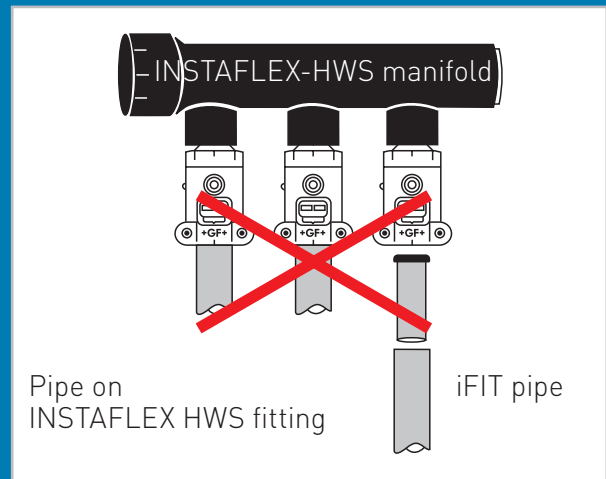
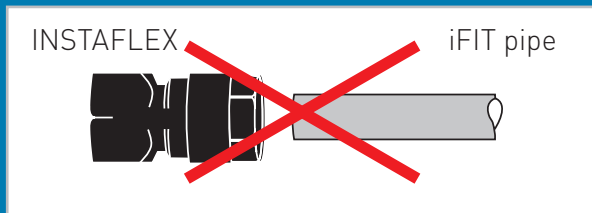
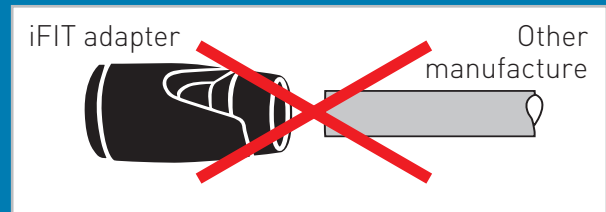
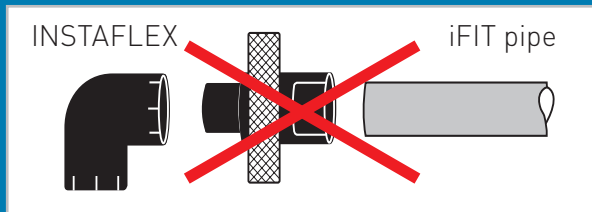
Diameter of protective sleeve for PB pipes

Conduit pipe d	Protective sleeve D
16	25
20	30
25	34

Installation guideline

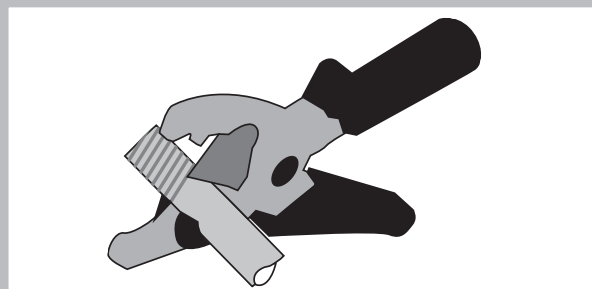


Unallowed system combinations



Application of the wall inlet plug for multi-layer composite and PB pipes

1. Fasten pipe until it's completely visible in the window.
2. Remove wall inlet pipe after the pressure test.
3. Cut damaged pipe before the installation.



iFIT Technical Data

Connection values for valves and fixtures

Intended uses for 1/2" connectors	Flow rate l/s	per connection l/min	Load value number per connection
Wash basins, wash troughs, wash stands, bidets, toilet tanks, soft drink machines	0.1	6	1
Wash basins, sinks, taps for balcony and terrace, hairdresser hoses, home dishwashers, washing troughs	0.2	12	2
Showers	0.3	18	3
Industrial sinks, stand and wall basins, Bathtubs, washing machines up to 6 kg, automatic urinal flushing, kitchen spray nozzle	0.4	24	4
Taps for garden and garage	0.5	30	5
Intended uses for 3/4" connectors			
Industrial sinks, bathtubs, showers, Taps for industry and garden	0.8	48	8

Load value table for PB and multi-layer composite pipes

Total load values	3	4	5	13	25	55
Greatest single value			4	5	8	
$d_a \times s$ (mm)	16 x 2.0			20 x 2.0	25 x 2.5	32 x 3.0
d_i (mm)	12			16	20	26
Recommended pipe length in m	9	5	4			
Valve	1/2"			3/4"	3/4"	1"

Flushing times iFIT

Multi-layer composite pipe and PB pipe

Pipe d16 x 2.0		Water content per metre pipe 0.11 l			
Pipe length in metres	Flow in l/s	0.2	0.3	0.4	0.5
	Flushing time in seconds				
1	1.1	0.6	0.4	0.3	0.2
2	2.3	1.1	0.8	0.6	0.5
4	4.5	2.3	1.5	1.1	0.9
8	9.0	4.5	3.0	2.3	1.8
10	11.3	5.7	3.8	2.8	2.3
12	13.6	6.8	4.5	3.4	2.7
14	15.8	7.9	5.3	4.0	3.2
16	18.1	9.0	6.0	4.5	3.6

The technical data are not binding and are not expressly warranted characteristics of the goods. They are subject to change. Please consult our General Conditions of Supply.

Multi-layer composite pipe and PB pipe

Pipe d20 x 2.0		Water content per metre pipe 0.2 l			
Pipe length in metres	Flow in l/s	0.2	0.3	0.4	0.5
	Flushing time in seconds				
1	2.0	1.0	0.7	0.5	0.4
2	4.0	2.0	1.3	1.0	0.8
4	8.0	4.0	2.7	2.0	1.6
8	16.0	8.0	5.3	4.0	3.2
10	20.0	10.0	6.7	5.0	4.0
12	24.0	12.0	8.0	6.0	4.8
14	28.0	14.0	9.3	7.0	5.6
16	32.0	16.0	10.7	8.0	6.4

iFIT Technical Data

Pressure loss single tapping iFIT

(for multi-layer composite and PB pipe)

Table 2a: Pressure loss values Pipe d16 x 2.0/
manifold/valve connection/2 pipe bends

V in l/s	Loop length in metres					
	1	2	3	4	5	6
	Pressure loss of loop in mbar					
0.10	30	37	43	50	57	64
0.15	67	67	67	67	67	67
0.20	116	143	170	197	224	251
0.25	185	228	271	314	357	400
0.30	26	328	390	452	514	576
0.35	362	446	530	615	699	783
0.40	473	583	693	803	913	1023
0.45	599	738	878	1017	1156	-
0.50	739	911	1083	-	-	-

Table 2b: Pressure loss values Pipe d20 x 2.0/
manifold/valve connection/2 pipe bends

V in l/s	Loop length in metres					
	1	2	3	4	5	6
	Pressure loss of loop in mbar					
0.10	7	9	11	12	14	15
0.15	17	17	17	17	17	17
0.20	30	36	43	49	56	62
0.25	46	57	67	77	87	97
0.30	67	81	96	110	125	139
0.35	91	111	131	150	170	190
0.40	119	145	171	197	223	249
0.45	150	183	216	249	281	314
0.50	186	226	267	307	347	388
0.55	225	274	323	372	421	469
0.60	268	326	384	442	501	559
0.65	314	382	451	519	587	656
0.70	364	444	523	602	681	760
0.75	418	509	600	691	782	873
0.80	476	579	682	786	889	993

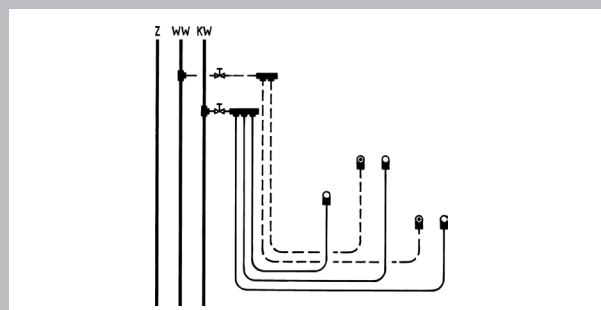
Multistory distribution

Piping systems and pressure loss calculation for multistory distribution.

Pressure loss which is a function of the flow in multistory distribution pipes is determined by using Tables 2a and 2b. Relevant for calculating the pressure loss is only the «hydraulic, least favourable flow path», i.e. the conduit with the greatest pressure loss.

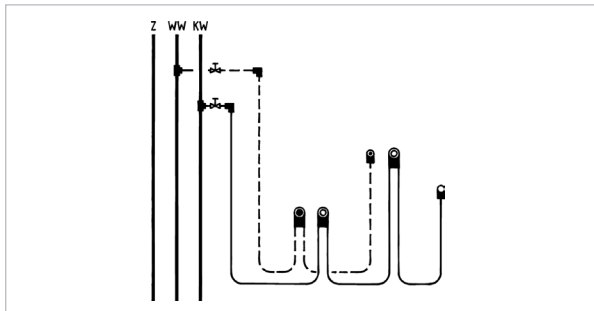
The load values for valves and fixtures are contained in the table on page 10.

Individual feed pipes (loops)



Individual feed pipes supply only one water tapping point apiece. The pressure loss can be read off the Tables 2a and 2b.

Continuous lines (loops)



Continuous lines supply several water tapping points from the manifold. The serial connection of the tapping points requires adding up the pressure losses.

Assigning the valve with the largest load unit to the beginning of the line results in significantly less pressure loss than the opposite way around.

The pressure loss in continuous lines is calculated using the peak flow. The peak flow calculation allows for a reduced simultaneity, i.e. not all the tapping points on a flow path are

used at the same time and over the same time period.

The peak flow (l/s) is established with the help of the corresponding simultaneity diagrams or calculation formulas from the guidelines and the sum of the load units.

If the pressure loss does not permit connecting all the tapping points to one line, they are divided up into two or more lines.

Pressure losses in pipe loops

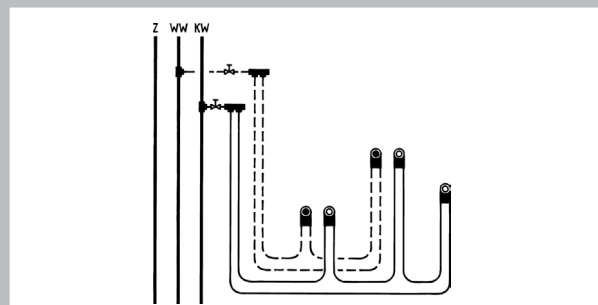
The pressure loss values from Table 2a and 2b contain individual resistances for changes in direction, valve connections and manifolds. The flushing time is calculated in relation to the fixtures (load values) on the entire length of the ring mains.

Ring mains

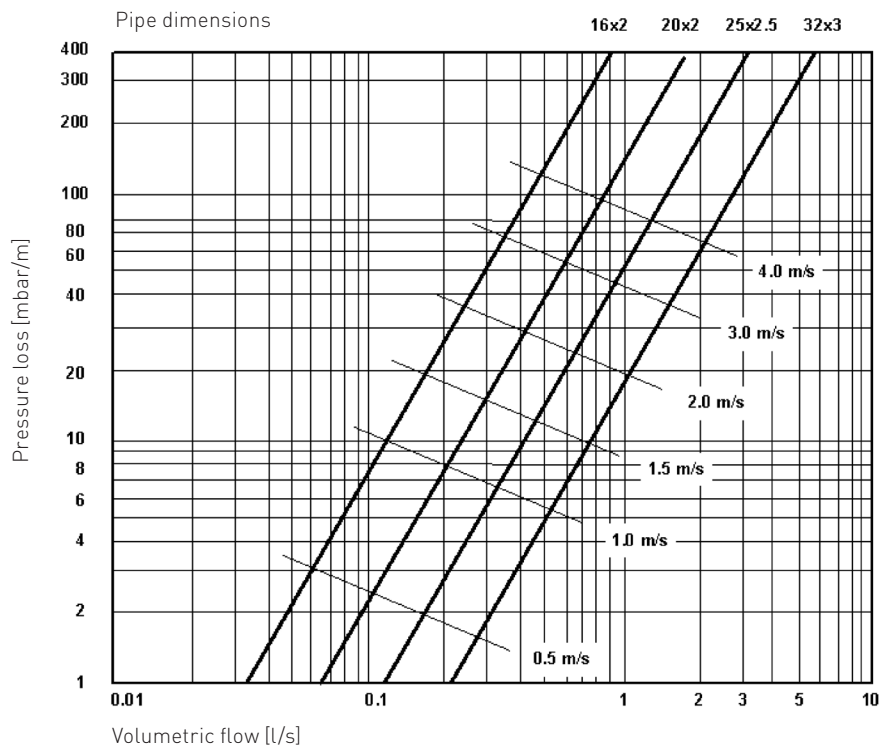
Ring mains supply several tapping points from the manifold. The tapping point is supplied with water from two sides.

Stagnation is thus avoided. In the ring mains there is ca. 70% less pressure loss compared to a continuous line.

To calculate the pressure loss, the ring mains is considered a continuous line with only one in-feed. The calculated pressure loss is multiplied by 0.3; the result is the pressure loss for the ring mains.



iFIT Dimensioning



The dimensioning and planning of iFIT drinking water pipelines is based on the W3 Water Guidelines, the Technical Regulations for Drinking Water Installations, and Determining the Pipe Diameter.

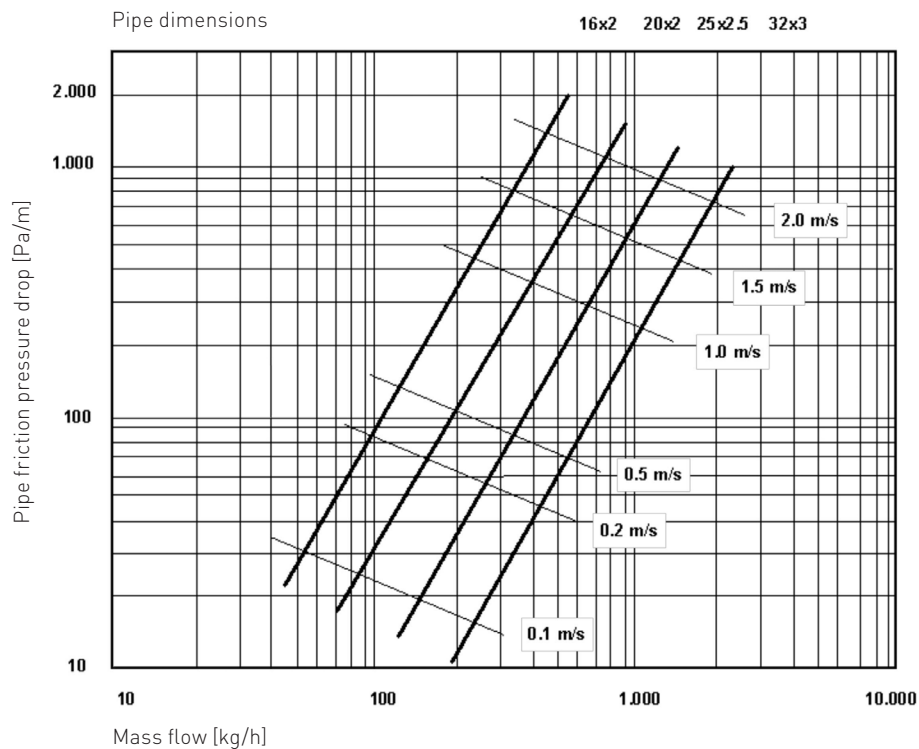
Dimensioning of Drinking Water Pipes

(for multi-layer composite and PB pipe)

The data required for calculation is to be taken from the above diagram. The values listed below are calculated equivalent values.

Equivalent pipe lengths in metres

Dimension	d16 metres	d20 metres	d25 metres	d32 metres
T-channel	1.4	0.7	1.3	1.8
T-outlet	1.2	1.3	3.1	4.5
Elbow	1.6	1.3	1.9	1.8
Coupling	1.4	0.7	1.3	1.8
Valve connection single	1.4	1.7		
Valve connection double	1.0	1.7		
Manifold	1.6	1.7		



Pipe friction pressure drops in relation to mass flow at an average heating temperature of 60°C.

Dimensioning of Plumbing and Heating Pipes

(for multi-layer composite and PEX pipe)

The data required for calculation is to be taken from the above pressure loss diagram.

Zeta value (loss coefficient)

Dimension	d16 Zeta value	d20 Zeta value	d25 Zeta value	d32 Zeta value
T-channel	2.85	1.30	1.60	1.75
T-outlet	2.45	2.65	3.95	4.40
Elbow	3.25	2.65	2.35	1.75
Coupling	2.85	1.30	1.60	1.75
Valve connection single	2.85	3.30		
Valve connection double	2.05	3.30		
Manifold	3.25	3.30		

Bending radii for multi-layer composite pipes

The pipe is easily bent into the desired shape by means of an exterior bending spring.



Important: Do not use a bending spring on the inside! iFIT tools must be used!

Minimum bending radii with and without tools

Measurements Da x s mm	Bending radius by hand mm	Bending radius with Bending spring mm
16 x 2.0	5 x dA = 80	3 x dA = 48
20 x 2.0	5 x dA = 100	3 x dA = 60
25 x 2.5	8 x dA = 200	4 x dA = 100
32 x 3.0		4 x dA = 128

Bending radii for polybutene

Polybutene pipes can generally be laid with a bending radius of 8 x d.

Heat insulation

The general insulation specifications for plumbing and heating installations apply.

Fire protection measures

For pipes conducted through fire areas, please observe the guidelines of VKF (Swiss Assoc. of Cantonal Fire Insurances) and the MLAR (Model Pipeline Configuration Regulations).

iFIT pipes are in Fire Class B2 according to DIN 4102, Part 1.

Hygienically safe

The hygienic safety of iFIT pipes and fittings is warranted through annual inspections according to the KTW (Plastic Drinking Water Systems) guidelines of the Federal Health Agency and according to DVGW (German Technical and Scientific Assoc. on Gas and Water) worksheet W270.

Pipe bracket spacing

d in mm	RA in m
16	1.0
20	1.0
25	1.5
32	2.0

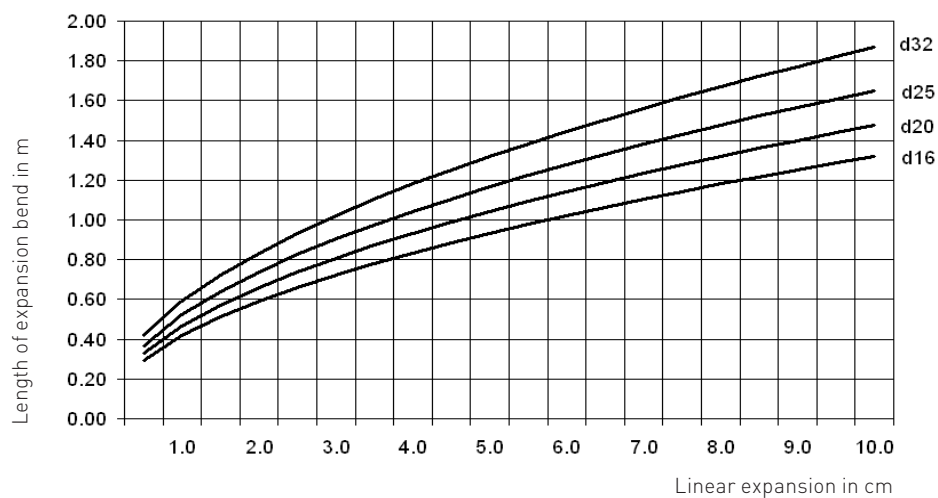
Expansion

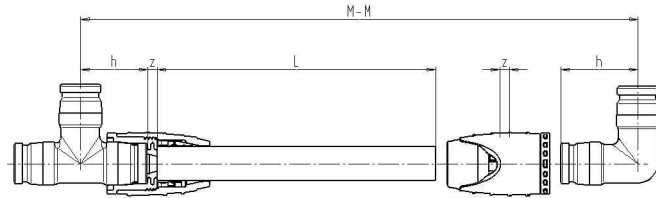
Pipe length

Temperature difference

L in m	10 K in mm	20 K in mm	30 K in mm	40 K in mm	50 K in mm	60 K in mm	70 K in mm	80 K in mm
1.0	0.26	0.52	0.78	1.04	1.30	1.56	1.82	2.08
2.0	0.52	1.04	1.56	2.08	2.60	3.12	3.64	4.16
3.0	0.78	1.56	2.34	3.12	3.90	4.68	5.46	6.24
4.0	1.04	2.08	3.12	4.16	5.20	6.24	7.28	8.32
5.0	1.30	2.60	3.90	5.20	6.50	7.80	9.10	10.40
6.0	1.56	3.12	4.68	6.24	7.80	9.36	10.92	12.48
7.0	1.82	3.64	5.46	7.28	9.10	10.92	12.74	14.56
8.0	2.08	4.16	6.24	8.32	10.40	12.48	14.56	16.64
9.0	2.34	4.68	7.02	9.36	11.70	14.04	16.38	18.72
10.0	2.60	5.20	7.80	10.40	13.00	15.60	18.20	20.80
15.0	3.90	7.80	11.70	15.60	19.50	23.40	27.30	31.20
20.0	5.20	10.40	15.60	20.80	26.00	31.20	36.40	41.60

Expansion bends

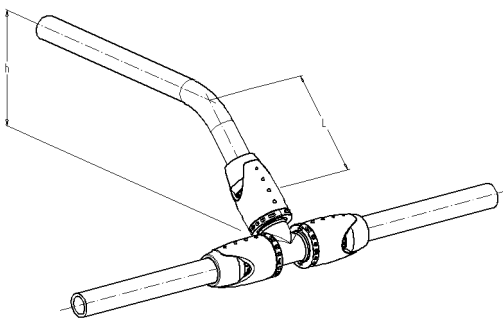




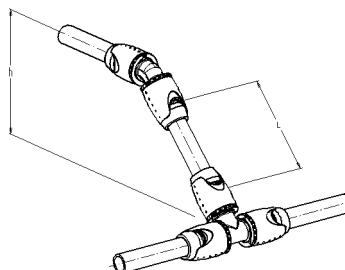
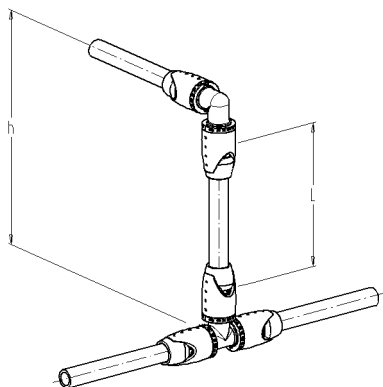
Calculation example

Dimension	M-M	h [T 90]	z [Adapter 1]	z [Adapter 2]	h Elbow 90°	Pipe size L [mm]
d 16	500	31	4.5	4.5	36	424
d 20	500	31	4.5	4.5	36	424
d 25	500	45	7.5	7.5	54	386
d 32	500	45	7.5	7.5	54	386

Tee equal Position change Elbow 45° Pipe bends



Position change	Dim DN	16	20	25	32
h min	mm	65	85	105	160
h mm	M-M mm	Pipe size L			
		mm	mm	mm	mm
80	113	71	-	-	-
90	127	85	85	-	-
100	141	100	100	-	-
110	156	114	114	-	-
120	170	128	128	108	-
130	184	142	142	122	-
140	198	156	156	136	-
150	212	170	170	150	-
160	226	184	184	164	164
170	240	199	199	178	178
180	255	213	213	193	193
190	269	227	227	207	207
200	283	241	241	221	221
210	297	255	255	235	235
220	311	269	269	249	249



Tee equal

Position change Elbow 90° Module

Position change	Dim	16	20	25	32
h min	DN	12	16	20	26
h min	mm	210	210	250	250
h mm	M-M mm	Pipe size L			
		mm	mm	mm	mm
210	210	127	127	-	-
220	220	137	137	-	-
230	230	147	147	-	-
240	240	157	157	-	-
250	250	167	167	126	126
260	260	177	177	136	136
270	270	187	187	146	146
280	280	197	197	156	156
290	290	207	207	166	166
300	300	217	217	176	176
310	310	227	227	186	186
320	320	237	237	196	196
330	330	247	247	206	206
340	340	257	257	216	216
350	350	267	267	226	226

Position change Elbow 45° Module

Position change	Dim	25	32
h min	DN	20	26
h min	mm	170	170
h mm	M-M mm	Pipe size L	Pipe size L
		mm	mm
170	240	130	130
180	255	145	145
190	269	159	159
200	283	173	173
210	297	187	187
220	311	201	201
230	325	215	215
240	339	229	229
250	354	244	244
260	368	258	258
270	382	272	272
280	396	286	286
290	410	300	300
300	424	314	314
310	438	328	328

Numerial Product Range Code number

Code	SP	Page	Cat-No	Dimension	Article
760 853 254		25	3920		3920 16 PIPE CLIP STEEL
760 853 283		27	3930		3930 200 PIPE BINDER PA
760 853 284		27	3930		3930 300 PIPE BINDER PA
760 853 291		16	3936		3936 1/2" MOUNTING BOLT STEEL
760 853 297		16	3937		3937 1/2" WALL INLET PLUG PA/St.
760 853 298		16	3938		3938 1/2" FASTENING SLEEVE PA/St.
760 853 299		26	3890		3890 16/20/25 PIPE TRANSFER PIECE PE
760 853 300		26	3891		3891 16/20 PIPE TRANSFER BEND PE
760 853 399		26	3892		3892 16/20 PIPE SUPPORT PE
760 853 567		25	3920		3920 20 PIPE CLIP STEEL
760 853 596		19	3268		3268 3/4 CAP LONG BRASS
760 853 628		25	3915		3915 16 PIPE CLIP STEEL
760 853 683		15	3935		3935 Installation bar 2m STEEL
760 853 706		19	3266		3266 1 CAP BRASS
760 853 792		20	3267		3267 3/4 PLUG BRASS
760 853 793		20	3267		3267 1 PLUG BRASS
760 853 794		19	3266		3266 3/4 CAP BRASS
760 854 677		15	3152		BRACKET FOR WASTE PIPE
760 854 951		25	3920		3920 25 PIPE CLIP STEEL
760 854 984		27	3930		3930 430 PIPE BINDER PA
760 854 986		27	3921		CAP FOR PROTECTIVE PIPE COLORS RED
760 854 987		27	3921		CAP FOR PROTECTIVE PIPE COLORS GREEN
760 854 988		27	3921		CAP FOR PROTECTIVE PIPE COLORS RED
760 854 989		27	3921		CAP FOR PROTECTIVE PIPE COLORS GREEN
760 856 042		15	3100		ANGULAR PLATE DOUBLE
760 856 201		25	3240		3240 600X500 SERVICE CABINET STEEL
760 856 202		25	3240		3240 750X500 SERVICE CABINET STEEL
760 856 207		25	3248		3248 600 SUPPORT WITH PIPE GUIDAGE
760 856 208		25	3248		3248 750 SUPPORT WITH PIPE GUIDAGE
760 856 212		19	3286		MOUNTING BRACKET M8 MANIFOLD 3286 3/4
760 859 806		17	2965		INJECTION MOULDING COLLAR D 1 / 2 MM
760 869 915		15	3100		ANGULAR PLATE TRIPLE
760 869 916		15	3100		ANGULAR PLATE DOUBLE
760 869 917		15	3100		ANGULAR PLATE SINGLE
760 869 918		15	3101		3101 80/153 DISTANCE PLATE FLAT STEEL
760 869 919		15	3101		3101 100 DISTANCE PLATE FLAT STEEL
760 869 920		15	3101		3101 DISTANCE PLATE FLAT STEEL
760 869 989		20	3264		3264 3/4 PLUG LONG BRASS
761 066 741		20	5093		5093 M8 BASE PLATE STEEL
762 101 000		5	4500		4500 16X2,0/100M Pipe multilayer
762 101 001		5	4500		4500 20X2,0/ 50M Pipe multilayer
762 101 003		5	4505		4505 16X2,0/ 75M Pipe ML prot pipe
762 101 004		5	4505		4505 20X2,0/ 50M Pipe ML prot pipe
762 101 005		5	4510		4510 16X2,0/ 5M Pipe multilayer
762 101 006		5	4510		4510 20X2,0/ 5M Pipe multilayer
762 101 007		5	4510		4510 25X2,5/ 5M Pipe multilayer
762 101 008		5	4510		4510 32X3,0/ 5M Pipe multilayer
762 101 011		6	4515		4515 25X2,5/ 30M Pipe PB prot pipe
762 101 012		6	4515		4515 16X2,0/ 60M Pipe PB prot pipe
762 101 013		6	4515		4515 20X2,0/ 60M Pipe PB prot pipe
762 101 017		8	4525		4525 16/20 Cap
762 101 018		12	4530		4530 16/20x44 Single pipe outlet 1/2
762 101 019		12	4530		4530 16/20x44 Single pipe outlet 3/4
762 101 022		12	4535		DUAL PIPE OUTLET RP 1/2 INCH
762 101 023		13	4545		WC SINGLE CONNECTION MODULE CONCEALED RP 1/2 INCH
762 101 024		6	4502		PIPE MULTILAYER INSLULATED 6MM D 16 MM
762 101 025		13	4546		4546 16/20 Pipe outlet flush Meplafix
762 101 026		13	4548		4548 16/20 Pipe outlet flush Meplafix
762 101 027		8	4525		4525 25/32 Cap
762 101 028		9	4531		SINGLE PIPE OUTLET WITH BOX RP 1/2 INCH
762 101 029		9	4536		4536 16/20x1/2x16/20 Dual pipe outlet
762 101 030		8	4520		4520 16 iFIT-Adaptor PA/PSU
762 101 031		8	4520		4520 20 iFIT-Adaptor PA/PSU
762 101 032		6	4502		PIPE MULTILAYER INSLULATED 6MM D 20 MM
762 101 033		16	4540		4540 16/20 Sound proofing
762 101 034		8	4520		4520 25 iFIT-Adaptor PA/PSU
762 101 035		8	4520		4520 32 iFIT-Adaptor PA/PSU
762 101 036		17	4541		4541 16/20 Simple sound proofing
762 101 037		17	4541		4541 16/20 Dual sound proofing
762 101 038		23	4605		ADAPTOR MALE MODULE R 1/2 INCH
762 101 039		23	4605		ADAPTOR MALE MODULE R 3/4 INCH

Code	SP	Page	Cat-No	Dimension	Article
762 101 040		23	4610		ADAPTOR FEMALE MODULE RP 1/2 INCH
762 101 041		23	4610		ADAPTOR FEMALE MODULE RP 3/4 INCH
762 101 042		22	4595		TEE EQUAL MODULE D 16 / 20 MM
762 101 043		6	4502		PIPE MULTILAYER INSLULATED 6MM D 25 MM
762 101 044		21	4585		4585 16/20 Socket/reducing bush PPSU
762 101 046		21	4590		ELBOW 90° MODULE D 16 / 20 MM
762 101 047		14	4547		4547 16/20x1/2 Pipe outlet 55
762 101 048		18	4550		4550 16/20 3/4 Double mainfold
762 101 049		18	4550		4550 16/20 3/4 Triple mainfold
762 101 051		24	4620		ADAPTOR ELBOW MALE THREAD-MODULE R 1/2 INCH
762 101 052		24	4620		ADAPTOR ELBOW MALE THREAD-MODULE R 3/4 INCH
762 101 053		18	4550		4550 16/20 3/4 mainfold 4-fold
762 101 055		24	4625		ADAPTOR TEE FEMALE THREAD-MODULE RP 1/2 INCH
762 101 056		23	4615		UNION FLAT SEAL MODULE G 3/4 INCH
762 101 057		10	4606		IFIT-INSTAFLEX ADAPTOR D1 16 MM
762 101 058		10	4606		IFIT-INSTAFLEX ADAPTOR D1 20 MM
762 101 059		10	4606		IFIT-INSTAFLEX ADAPTOR D1 25 MM
762 101 060		10	4606		IFIT-INSTAFLEX ADAPTOR D1 32 MM
762 101 061		30	4054		4571 L
762 101 062		30	4054		4572 L
762 101 063		30	4054		4573 d15/50mm Spacer
762 101 064		28	4555		4555 16/20 Single conect elbow
762 101 065		28	4560		4560 16/20 Double connect elbow
762 101 066		28	4565		4565 16/20 Sound proofing element
762 101 068		28	4570		CROSS-TEE MODULE D 16 / 20 MM
762 101 070		12	4530		4530 16/20x64 Single pipe outlet 1/2
762 101 071		12	4535		DUAL PIPE OUTLET RP 1/2 INCH
762 101 072		29	4580		4580 3/4-16 EURO-cone
762 101 073		29	4580		4580 3/4-20 EURO-cone
762 101 074		6	4502		PIPE MULTILAYER INSLULATED 6MM D *32 MM
762 101 076		6	4502		PIPE MULTILAYER INSLULATED 9MM D 16 MM
762 101 078		6	4502		PIPE MULTILAYER INSLULATED 9MM D 20 MM
762 101 082		6	4502		PIPE MULTILAYER INSLULATED 9MM D 25 MM
762 101 084		6	4502		PIPE MULTILAYER INSLULATED 9MM D *32 MM
762 101 086		7	4502		PIPE MULTILAYER INSLULATED 13MM D *16 MM
762 101 090		7	4502		PIPE MULTILAYER INSLULATED 13MM D *20 MM
762 101 091		23	4605		ADAPTOR MALE MODULE R 3/4 INCH
762 101 092		23	4605		ADAPTOR MALE MODULE R 1 INCH
762 101 093		23	4610		ADAPTOR FEMALE MODULE RP 3/4 INCH
762 101 094		23	4610		ADAPTOR FEMALE MODULE RP 1 INCH
762 101 095		23	4615		UNION FLAT SEAL MODULE G 3/4 INCH
762 101 096		23	4615		UNION FLAT SEAL MODULE G 1 INCH
762 101 097		23	4615		UNION FLAT SEAL MODULE G 1 1/4 INCH
762 101 098		23	4615		UNION FLAT SEAL MODULE G 1 1/2 INCH
762 101 099		24	4620		ADAPTOR ELBOW MALE THREAD-MODULE R 3/4 INCH
762 101 100		24	4620		ADAPTOR ELBOW MALE THREAD-MODULE R 1 INCH
762 101 101		24	4630		ADAPTOR ELBOW FEMALE THREAD-MODULE RP 1/2 INCH
762 101 103		24	4625		ADAPTOR TEE FEMALE THREAD-MODULE RP 3/4 INCH
762 101 104		7	4502		PIPE MULTILAYER INSLULATED 13MM D *25 MM
762 101 105		24	4630		ADAPTOR ELBOW FEMALE THREAD-MODULE RP 3/4 INCH
762 101 108		31	4645		4645 16/20 Pipe shears
762 101 109		31	4645		4646 16/20 Spare blade for pipe shears
762 101 112		31	4650		4650 16 Pipe bending
762 101 113		31	4650		4650 20 Pipe bending
762 101 114		31	4650		4650 25 Pipe bending
762 101 115		31	4650		4650 32 Pipe bending
762 101 116		31	4640		4640 16 Chamfering tool
762 101 117		31	5300		5300 16-32 Pipe cutter
762 101 118		31	5300		5301 16-32 Spare blades
762 101 119		33	4651		4651 iFIT tool belt without tools
762 101 120		31	4640		4640 20 Chamfering tool
762 101 122		31	4635		4635 16/20 Tool-set
762 101 124		7	4502		PIPE MULTILAYER INSLULATED 13MM D *32 MM
762 101 125		31	4640		4640 25 Chamfering tool
762 101 126		6	4516		4516 16X2,0/ 60M Pipe PB
762 101 127		6	4516		4516 20X2,0/ 60M Pipe PB
762 101 128		6	4516		4516 25X2,5/ 30M Pipe PB
762 101 130		5	4500		4500 25X2,5/ 50M Pipe multilayer
762 101 131		5	4500		4500 32X3,0/ 50M Pipe multilayer
762 101 132		31	4640		4640 32 Chamfering tool
762 101 133		31	4635		4635 25/32 Tool-set
762 101 150		32	4526		WALL INLET PLUG D 16 MM
762 101 151		32	4526		WALL INLET PLUG D 20 MM
762 101 152		32	4526		WALL INLET PLUG D 25 MM

Code	SP	Page	Cat-No	Dimension	Article
762 101 153		32	4526		WALL INLET PLUG D 32 MM
762 101 154		32	4665		4665 16 Pipe draw coupling
762 101 155		32	4665		4665 20 Pipe draw coupling
762 101 175		21	4585		4585 25/32 Socket/reducing bush
762 101 177		21	4586		REDUCING BUSH MODULE D1 32 / 25 MM
762 101 179		21	4590		ELBOW 90° MODULE D 25 / 32 MM
762 101 180		22	4591		ELBOW 45° MODULE D 25 / 32 MM
762 101 181		22	4595		TEE EQUAL MODULE D 25 / 32 MM
762 101 183		22	4600		TEE REDUCED MODULE D1 25 / 32 MM
762 101 185		22	4600		TEE REDUCED MODULE D1 25 / 32 MM
762 101 187		22	4600		TEE REDUCED MODULE D1 25 / 32 MM
762 101 190		11	4680		IFIT-PRESS MODULE D2 15 MM
762 101 191		11	4680		IFIT-PRESS MODULE D2 18 MM
762 101 192		11	4680		IFIT-PRESS MODULE D2 22 MM
762 101 193		11	4680		IFIT-PRESS MODULE D2 28 MM

Numerial Product Range Catalog number

Cat-No	Dimension	SP	Page	Code	Article
2965			17	760 859 806	INJECTION MOULDING COLLAR D 1 / 2 MM
3100			15	760 856 042	ANGULAR PLATE DOUBLE
3100			15	760 869 915	ANGULAR PLATE TRIPLE
3100			15	760 869 916	ANGULAR PLATE DOUBLE
3100			15	760 869 917	ANGULAR PLATE SINGLE
3101			15	760 869 918	3101 80/153 DISTANCE PLATE FLAT STEEL
3101			15	760 869 919	3101 100 DISTANCE PLATE FLAT STEEL
3101			15	760 869 920	3101 DISTANCE PLATE FLAT STEEL
3152			15	760 854 677	BRACKET FOR WASTE PIPE
3240			25	760 856 201	3240 600X500 SERVICE CABINET STEEL
3240			25	760 856 202	3240 750X500 SERVICE CABINET STEEL
3248			25	760 856 207	3248 600 SUPPORT WITH PIPE GUIDAGE
3248			25	760 856 208	3248 750 SUPPORT WITH PIPE GUIDAGE
3264			20	760 869 989	3264 3/4 PLUG LONG BRASS
3266			19	760 853 706	3266 1 CAP BRASS
3266			19	760 853 794	3266 3/4 CAP BRASS
3267			20	760 853 792	3267 3/4 PLUG BRASS
3267			20	760 853 793	3267 1 PLUG BRASS
3268			19	760 853 596	3268 3/4 CAP LONG BRASS
3286			19	760 856 212	MOUNTING BRACKET M8 MANIFOLD 3286 3/4
3890			26	760 853 299	3890 16/20/25 PIPE TRANSFER PIECE PE
3891			26	760 853 300	3891 16/20 PIPE TRANSFER BEND PE
3892			26	760 853 399	3892 16/20 PIPE SUPPORT PE
3915			25	760 853 628	3915 16 PIPE CLIP STEEL
3920			25	760 853 254	3920 16 PIPE CLIP STEEL
3920			25	760 853 567	3920 20 PIPE CLIP STEEL
3920			25	760 854 951	3920 25 PIPE CLIP STEEL
3921			27	760 854 986	CAP FOR PROTECTIVE PIPE COLORS RED
3921			27	760 854 987	CAP FOR PROTECTIVE PIPE COLORS GREEN
3921			27	760 854 988	CAP FOR PROTECTIVE PIPE COLORS RED
3921			27	760 854 989	CAP FOR PROTECTIVE PIPE COLORS GREEN
3930			27	760 853 283	3930 200 PIPE BINDER PA
3930			27	760 853 284	3930 300 PIPE BINDER PA
3930			27	760 854 984	3930 430 PIPE BINDER PA
3935			15	760 853 683	3935 Installation bar 2m STEEL
3936			16	760 853 291	3936 1/2" MOUNTING BOLT STEEL
3937			16	760 853 297	3937 1/2" WALL INLET PLUG PA/St.
3938			16	760 853 298	3938 1/2" FASTENING SLEEVE PA/St.
4054			30	762 101 061	4571 L
4054			30	762 101 062	4572 L
4054			30	762 101 063	4573 d15/50mm Spacer
4500			5	762 101 000	4500 16X2,0/100M Pipe multilayer
4500			5	762 101 001	4500 20X2,0/ 50M Pipe multilayer
4500			5	762 101 130	4500 25X2,5/ 50M Pipe multilayer
4500			5	762 101 131	4500 32X3,0/ 50M Pipe multilayer
4502			6	762 101 024	PIPE MULTILAYER INSLULATED 6MM D 16 MM
4502			6	762 101 032	PIPE MULTILAYER INSLULATED 6MM D 20 MM
4502			6	762 101 043	PIPE MULTILAYER INSLULATED 6MM D 25 MM
4502			6	762 101 074	PIPE MULTILAYER INSLULATED 6MM D *32 MM
4502			6	762 101 076	PIPE MULTILAYER INSLULATED 9MM D 16 MM
4502			6	762 101 078	PIPE MULTILAYER INSLULATED 9MM D 20 MM
4502			6	762 101 082	PIPE MULTILAYER INSLULATED 9MM D 25 MM
4502			6	762 101 084	PIPE MULTILAYER INSLULATED 9MM D *32 MM
4502			7	762 101 086	PIPE MULTILAYER INSLULATED 13MM D *16 MM
4502			7	762 101 090	PIPE MULTILAYER INSLULATED 13MM D *20 MM
4502			7	762 101 104	PIPE MULTILAYER INSLULATED 13MM D *25 MM
4502			7	762 101 124	PIPE MULTILAYER INSLULATED 13MM D *32 MM
4505			5	762 101 003	4505 16X2,0/ 75M Pipe ML prot pipe
4505			5	762 101 004	4505 20X2,0/ 50M Pipe ML prot pipe
4510			5	762 101 005	4510 16X2,0/ 5M Pipe multilayer
4510			5	762 101 006	4510 20X2,0/ 5M Pipe multilayer
4510			5	762 101 007	4510 25X2,5/ 5M Pipe multilayer
4510			5	762 101 008	4510 32X3,0/ 5M Pipe multilayer
4515			6	762 101 011	4515 25X2,5/ 30M Pipe PB prot pipe
4515			6	762 101 012	4515 16X2,0/ 60M Pipe PB prot pipe
4515			6	762 101 013	4515 20X2,0/ 60M Pipe PB prot pipe
4516			6	762 101 126	4516 16X2,0/ 60M Pipe PB
4516			6	762 101 127	4516 20X2,0/ 60M Pipe PB
4516			6	762 101 128	4516 25X2,5/ 30M Pipe PB

Cat-No	Dimension	SP	Page	Code	Article
4520			8	762 101 030	4520 16 iFIT-Adaptor PA/PSU
4520			8	762 101 031	4520 20 iFIT-Adaptor PA/PSU
4520			8	762 101 034	4520 25 iFIT-Adaptor PA/PSU
4520			8	762 101 035	4520 32 iFIT-Adaptor PA/PSU
4525			8	762 101 017	4525 16/20 Cap
4525			8	762 101 027	4525 25/32 Cap
4526			32	762 101 150	WALL INLET PLUG D 16 MM
4526			32	762 101 151	WALL INLET PLUG D 20 MM
4526			32	762 101 152	WALL INLET PLUG D 25 MM
4526			32	762 101 153	WALL INLET PLUG D 32 MM
4530			12	762 101 018	4530 16/20x44 Single pipe outlet 1/2
4530			12	762 101 019	4530 16/20x44 Single pipe outlet 3/4
4530			12	762 101 070	4530 16/20x64 Single pipe outlet 1/2
4531			9	762 101 028	SINGLE PIPE OUTLET WITH BOX RP 1/2 INCH
4535			12	762 101 022	DUAL PIPE OUTLET RP 1/2 INCH
4535			12	762 101 071	DUAL PIPE OUTLET RP 1/2 INCH
4536			9	762 101 029	4536 16/20x1/2x16/20 Dual pipe outlet
4540			16	762 101 033	4540 16/20 Sound proofing
4541			17	762 101 036	4541 16/20 Simple sound proofing
4541			17	762 101 037	4541 16/20 Dual sound proofing
4545			13	762 101 023	WC SINGLE CONNECTION MODULE CONCEALED RP 1/2 INCH
4546			13	762 101 025	4546 16/20 Pipe outlet flush Meplafix
4547			14	762 101 047	4547 16/20x1/2 Pipe outlet 55
4548			13	762 101 026	4548 16/20 Pipe outlet flush Meplafix
4550			18	762 101 048	4550 16/20 3/4 Double manifold
4550			18	762 101 049	4550 16/20 3/4 Triple manifold
4550			18	762 101 053	4550 16/20 3/4 manifold 4-fold
4555			28	762 101 064	4555 16/20 Single connect elbow
4560			28	762 101 065	4560 16/20 Double connect elbow
4565			28	762 101 066	4565 16/20 Sound proofing element
4570			28	762 101 068	CROSS-TEE MODULE D 16 / 20 MM
4580			29	762 101 072	4580 3/4-16 EURO-cone
4580			29	762 101 073	4580 3/4-20 EURO-cone
4585			21	762 101 044	4585 16/20 Socket/reducing bush PPSU
4585			21	762 101 175	4585 25/32 Socket/reducing bush
4586			21	762 101 177	REDUCING BUSH MODULE D1 32 / 25 MM
4590			21	762 101 046	ELBOW 90° MODULE D 16 / 20 MM
4590			21	762 101 179	ELBOW 90° MODULE D 25 / 32 MM
4591			22	762 101 180	ELBOW 45° MODULE D 25 / 32 MM
4595			22	762 101 042	TEE EQUAL MODULE D 16 / 20 MM
4595			22	762 101 181	TEE EQUAL MODULE D 25 / 32 MM
4600			22	762 101 183	TEE REDUCED MODULE D1 25 / 32 MM
4600			22	762 101 185	TEE REDUCED MODULE D1 25 / 32 MM
4600			22	762 101 187	TEE REDUCED MODULE D1 25 / 32 MM
4605			23	762 101 038	ADAPTOR MALE MODULE R 1/2 INCH
4605			23	762 101 039	ADAPTOR MALE MODULE R 3/4 INCH
4605			23	762 101 091	ADAPTOR MALE MODULE R 3/4 INCH
4605			23	762 101 092	ADAPTOR MALE MODULE R 1 INCH
4606			10	762 101 057	IFIT-INSTAFLEX ADAPTOR D1 16 MM
4606			10	762 101 058	IFIT-INSTAFLEX ADAPTOR D1 20 MM
4606			10	762 101 059	IFIT-INSTAFLEX ADAPTOR D1 25 MM
4606			10	762 101 060	IFIT-INSTAFLEX ADAPTOR D1 32 MM
4610			23	762 101 040	ADAPTOR FEMALE MODULE RP 1/2 INCH
4610			23	762 101 041	ADAPTOR FEMALE MODULE RP 3/4 INCH
4610			23	762 101 093	ADAPTOR FEMALE MODULE RP 3/4 INCH
4610			23	762 101 094	ADAPTOR FEMALE MODULE RP 1 INCH
4615			23	762 101 056	UNION FLAT SEAL MODULE G 3/4 INCH
4615			23	762 101 095	UNION FLAT SEAL MODULE G 3/4 INCH
4615			23	762 101 096	UNION FLAT SEAL MODULE G 1 INCH
4615			23	762 101 097	UNION FLAT SEAL MODULE G 1 1/4 INCH
4615			23	762 101 098	UNION FLAT SEAL MODULE G 1 1/2 INCH
4620			24	762 101 051	ADAPTOR ELBOW MALE THREAD-MODULE R 1/2 INCH
4620			24	762 101 052	ADAPTOR ELBOW MALE THREAD-MODULE R 3/4 INCH
4620			24	762 101 099	ADAPTOR ELBOW MALE THREAD-MODULE R 3/4 INCH
4620			24	762 101 100	ADAPTOR ELBOW MALE THREAD-MODULE R 1 INCH
4625			24	762 101 055	ADAPTOR TEE FEMALE THREAD-MODULE RP 1/2 INCH
4625			24	762 101 103	ADAPTOR TEE FEMALE THREAD-MODULE RP 3/4 INCH
4630			24	762 101 101	ADAPTOR ELBOW FEMALE THREAD-MODULE RP 1/2 INCH
4630			24	762 101 105	ADAPTOR ELBOW FEMALE THREAD-MODULE RP 3/4 INCH
4635			31	762 101 122	4635 16/20 Tool-set
4635			31	762 101 133	4635 25/32 Tool-set
4640			31	762 101 116	4640 16 Chamfering tool
4640			31	762 101 120	4640 20 Chamfering tool
4640			31	762 101 125	4640 25 Chamfering tool

Cat-No	Dimension	SP	Page	Code	Article
4640			31	762 101 132	4640 32 Chamfering tool
4645			31	762 101 108	4645 16/20 Pipe shears
4645			31	762 101 109	4646 16/20 Spare blade for pipe shears
4650			31	762 101 112	4650 16 Pipe bending
4650			31	762 101 113	4650 20 Pipe bending
4650			31	762 101 114	4650 25 Pipe bending
4650			31	762 101 115	4650 32 Pipe bending
4651			33	762 101 119	4651 iFIT tool belt without tools
4665			32	762 101 154	4665 16 Pipe draw coupling
4665			32	762 101 155	4665 20 Pipe draw coupling
4680			11	762 101 190	IFIT-PRESS MODULE D2 15 MM
4680			11	762 101 191	IFIT-PRESS MODULE D2 18 MM
4680			11	762 101 192	IFIT-PRESS MODULE D2 22 MM
4680			11	762 101 193	IFIT-PRESS MODULE D2 28 MM
5093			20	761 066 741	5093 M8 BASE PLATE STEEL
5300			31	762 101 117	5300 16-32 Pipe cutter
5300			31	762 101 118	5301 16-32 Spare blades

GF Piping Systems → worldwide at home

Our sales companies and representatives ensure local customer support in over 100 countries.

www.piping.georgfischer.com



The technical data are not binding and not expressly warranted characteristics of the goods. They are subject to change. Our General Conditions of Sale apply.

Adding Quality to People's Lives



ΚΕΝΤΡΙΚΟ: ΠΛΑΤΑΝΙ, ΡΙΟΝ, ΤΚ 26504
ΤΗΛ: +30 2610 911411-2, 994363 - **ΦΑΞ:** +30 2610 225440

ΥΠ/ΜΑ: ΚΑΡΑΙΣΚΑΚΗ 27-29, ΠΑΤΡΑ, ΤΚ 26225
ΤΗΛ: +30 2610 225440, 620524 - **ΦΑΞ:** +30 2610 225440

www.tselcon.gr

info@tselcon.gr